

25-28 APRIL 2024

HARROGATE SPRING FLOWER SHOW

# FLORAL ART HANDBOOK





# SHOW INFORMATION

## SHOW LOCATION

GREAT YORKSHIRE SHOWGROUND  
HARROGATE  
NORTH YORKSHIRE

Competitors to follow yellow AA Road signs marked 'Exhibitor' or 'E' on staging day

## REGISTERED OFFICE ADDRESS:

(Correspondence only)  
North of England Horticultural Society  
6 The Stables,  
Newby Hall  
Ripon  
HG4 5AE

## OPENING TIMES

Thursday - Sunday 09:30 - 17:00  
Sunday sell off - 16:30

## TICKET PRICES

Pre-booked Adult - £22  
Adult - £25  
Children under 16 Free with fee paying adult.

## COMPETITOR BADGES/TICKETS

Each competitor will receive one badge allowing entry into the show each day. This must be shown at the gate.  
An additional ticket for assisting in breakdown is available. This ticket allows access for an assistant from **15:30 on Sunday** only.

## COMPETITOR PARKING

STAGING DAY - Wednesday 24th April  
Parking is unrestricted, no permit or badge is required.

SHOW DAYS - Due to limited parking, competitors are required to park in the public car park.

BREAK DOWN - To aid in the breakdown of exhibits, competitors are entitled to one 'break down' pass that allows access to the exhibitor car park from 15:30 on Sunday. All occupants in vehicle must have badge/ticket.

## STAGING

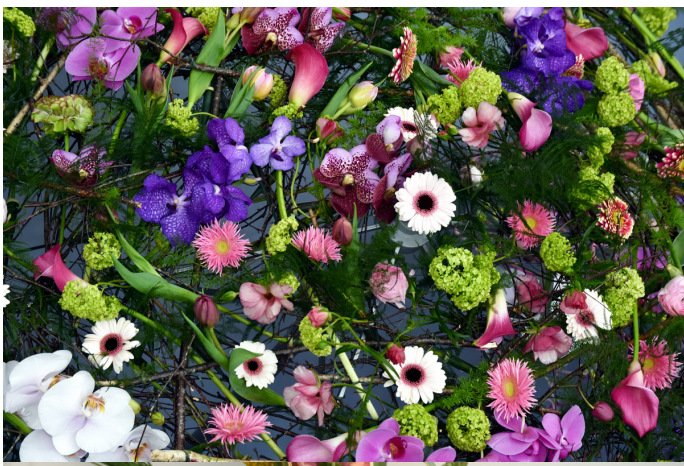
Staging may commence from 14:00 on Wednesday 24th and must be completed by 06:00 on Thursday 25th. Competitors must leave the marquee at this time for judging. Each competitor is allowed to enter no more than one entry in each class. All classes are to be staged by one competitor unless otherwise stated.

## BREAK DOWN

Competitors must not remove exhibits before the close of show on Sunday at 17:00. A whistle will be blown to indicate when dismantling may begin.

All exhibits must be removed by 18:30 on Sunday 28th, unless by prior written arrangement.





## **INFORMATION POINT**

The Show Office, located in the foyer of Hall 1, is able to answer general questions on the show and will be open during staging and show days.

## **EMERGENCY CONTACT**

In case of emergency, contact the show office or locate your nearest staff member / steward.

## **SECURITY**

24 hour security will commence at 18:00 on Monday 22nd April and run to 08:00 on Monday 29th April.

## **FIRST AID**

A first aid response team is based on-site during staging and show days between 08:30-18:00. If you require first aid please tell a staff member or the show office.

## **ANIMALS**

No animals, other than those required as assistance, are permitted into the show or car park.

The right to alter, amend, add or cancel any of these conditions, rules and regulations and to grant relaxation in any individual case is reserved by the Organiser. All exhibitors will read, understand and agree to all information in this handbook and other provided documents. Further regulations are available in the Exhibitors handbook, please ask if you require a copy.

The Show Director's decision is final in all cases. The North of England Horticultural Society decisions take precedent over both NAFAS and the UK Floristry Judges' Guild rules.

The Show Organisers reserve the right to regulate the number of entries in any class.

All objections or complaints must be made in writing and signed on the first day of the show.



**HARROGATE**  
**FLOWER SHOWS**



# FLOWER ARRANGING

## CLASSES A1 - A9

The Flower Arranging classes will be judged in accordance with the NAFAS competitions manual (2023 Blue Book). It is strongly recommended that competitors in these classes refer to this manual.

All measurements are approximate and exhibits should be adaptable.

Pre-prepared background work is permitted in all classes with design to be completed in situ, unless otherwise stated in the schedule.

Please note, we are encouraging minimal use of floral foam.

Artificial plant material may not be used, and the use of aerosol within the marquee is not permitted.

### **ENTRY**

Forms and risk assessments should be returned by 15th March via email to [beth@flowershow.org.uk](mailto:beth@flowershow.org.uk) or posted to 6 The Stables, Newby Hall, Ripon, HG4 5AE

You will receive email confirmation upon receipt. If you do not, please contact the office.

If you have entered but are unable to exhibit, please let us know as soon as possible so to avoid empty niches.

An exhibit is composed of natural plant material, in all its forms, with or without accessories, contained within a space specified in the show schedule.

For reasons for disqualification, please refer to the NAFAS handbook.

### **TROPHIES**

Trophies will be awarded in the following categories:

-  Best in show
-  Best use of colour
-  Best use of UK garden plant material
-  Most points awarded.

Other awards may also be given.







# FLORISTRY

## CLASSES B1 - B4

### JUDGING

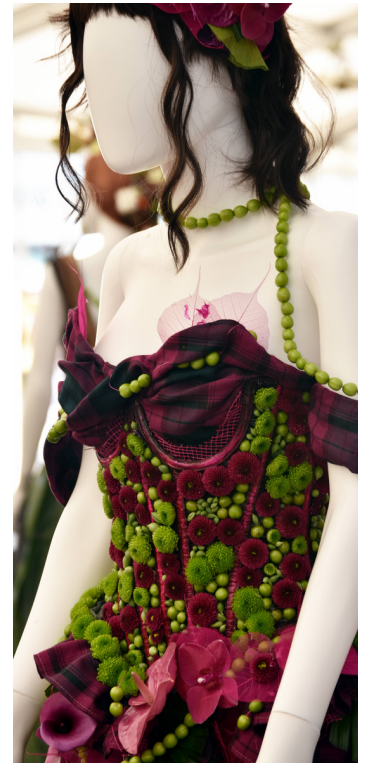
The Floristry Classes are to be judged in accordance with the UK Floristry Judges Guild. Information on judging and marks allocation can be found at [www.floristryjudgesguild.co.uk/competitions.htm](http://www.floristryjudgesguild.co.uk/competitions.htm)

Each competitor will receive a marked criteria sheet indicating their scores under each criteria.

### GENERAL

All measurements are approximate and exhibits should be adaptable. All arrangements may be brought to the show ready prepared. Fresh flowers/plant material to predominate.

Entries should be staged by one entrant only, unless otherwise stated. Artificial plant material may not be used, and the use of aerosol within the marquee is not permitted.



### ENTRY



Forms and risk assessments should be returned by Friday 15th March via email to [beth@flowershow.org.uk](mailto:beth@flowershow.org.uk) or posted to 6 The Stables, Newby Hall, Ripon, HG4 5AE



You will receive email confirmation upon receipt of application. If you have entered but are no longer able to exhibit, please let us know as soon as possible so to avoid empty niches.

### TROPHIES

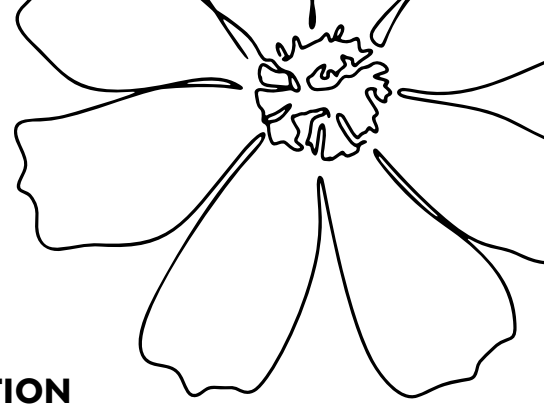
Trophies will be awarded in the following categories:

-  Best in show
  -  Overall student winner
- Other awards may also be given.





# LIVE IMPOSED CLASSES



## REGISTRATION

Please report to the Floral Art Pavilion thirty minutes before your designated slot to be registered at the Live Imposed Booths.

## ENTRY

Forms and risk assessments should be returned by Friday 15th March via email to [beth@flowershow.org.uk](mailto:beth@flowershow.org.uk) or posted to 6 The Stables, Newby Hall, Ripon, HG4 5AE.

You will receive email confirmation upon receipt of application. If you have entered but are no longer able to exhibit, please let us know as soon as possible so to avoid empty niches.

## JUDGING

The class will be judged to a bespoke criteria. 1st, 2nd, 3rd and highly commended may be issued after each session. Competitors must leave the area whilst judging occurs.



## COMPETITORS TOOL KIT

### - ALLOWED ITEMS

- Florist knife, secateurs, sharp scissors
- Pot-tape and double sided tape
- String
- A variety of wire cutters
- Saw
- Bradawl
- Battery operated drills (must be completely charged as there will be no access to electrical sockets)
- Hammer
- Water mister
- Tape Measure
- Selection of Floristry Wires

Attachments to staging are not permitted. All tool boxes will be checked prior to commencement of class and items may be removed if deemed inappropriate.





## AWARDS AND PRIZE MONIES

A1, A4 & B1 : 1st Prize - £50  
2nd Prize - £40  
3rd Prize - £30

ALL OTHER CLASSES: 1st Prize £35  
2nd Prize £30  
3rd Prize £20

Prize monies and allowances will be paid via BACS within one month of the show closing using the details provided on your entry form.

### PRESENTATION OF TROPHIES

The presentation of trophies for Floral Art will take place in the Floral Art Pavilion at 16:30 on Sunday 28th April. Harrogate Flower Shows will endeavour to contact trophy winners in advance so that they are present to collect their trophy.

Trophies won at the 2023 Harrogate Flower Show should be returned by the winner to the Show Office before the 2024 Presentation.

### ADDITIONAL INFORMATION

Please note that, whilst care is taken for the protection of all exhibits, the Society will not in any case hold itself responsible for loss or damage to exhibit or accessory. This includes any damage sustained on way to or from or during the show. All items are required to be insured by the competitor.

Judges' comment card and award cards must be left by exhibits until close of show on Sunday 28th.

All drapes and backgrounds must be supported independently on stands provided by competitor and must not predominate.

**TELEPHONE:** 01423 648212

**FLORAL ART EMAIL:** [beth@flowershow.org.uk](mailto:beth@flowershow.org.uk)

**GENERAL EMAIL:** [info@flowershow.org.uk](mailto:info@flowershow.org.uk)

**WEBSITE:** [www.flowershow.org.uk](http://www.flowershow.org.uk)

**FACEBOOK:** [www.facebook.com/HarrogateFlowerShow](http://www.facebook.com/HarrogateFlowerShow)

**INSTAGRAM:** [harrogateflowershow](https://www.instagram.com/harrogateflowershow)

**TWITTER:** [@harrogateflower](https://twitter.com/harrogateflower)

**TIKTOK:** [harrogateflowershow](https://www.tiktok.com/@harrogateflowershow)



# HARROGATE FLOWER SHOWS

